



# 3M™ 6000 Series Full Face Mask

## Cleaning and Inspection



### Before Use

- Inspect respirator for incorrectly fitted and/or damaged parts. Replace if necessary.
- Inspect the exhalation valve and seat. Any damaged or deteriorated valves should be replaced

### Monthly

- Carry out all the 'Before Use' inspections
- Check:
  - Face Seal
  - Nose Cup
  - Straps
  - Valves and Gaskets
  - Visor
- Create record of this monthly check

### After Use

- Disassemble by removing the filters and nose cup. The centre adaptor, lens and face seal can also be removed if necessary
- Clean with 3M 105 wipe or by immersing in warm cleaning solution, and scrub with a soft brush until clean. Parts may also be cleaned in a washer. Water temperature not to exceed 50°C
- Do not use cleaning agents that contain lanolin or other oils
- If required disinfect by soaking in a solution of quaternary ammonia disinfectant or sodium hypochlorite (50ppm chlorine)
- Rinse in fresh warm water
- Air dry in a non-contaminated atmosphere

### Ordering Consumables, Repair Parts and Accessories

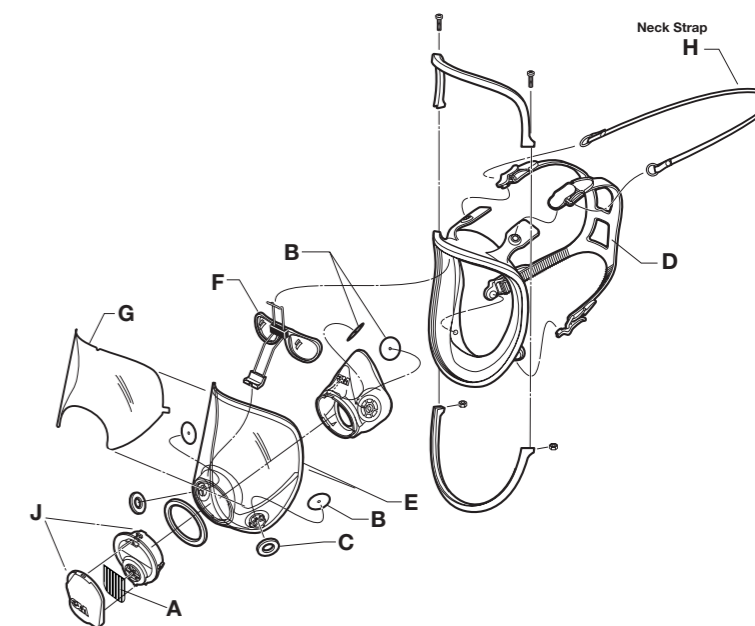
To request a quote or place an order for these items, please contact your 3M Approved Distributor.

### Further Information and Advice

If you require additional guidance on the Care and Maintenance of your 3M Reusable Respirators, please contact the Helpline.

### 3M Health and Safety Helpline

0870 60 800 60 (UK)  
1 800 320 500 (Ireland)



		3M Part Number		3M Part Number	
A	Exhalation Valve	7583	F	Spectacle Kit	6878
B	Inhale Valve	6893	G	Lens Cover Peel Offs	6885
C	Inhalation Gasket	6895	H	Neckstrap Assembly	7883
D	Head Harness Assembly Includes head harness and buckle	6897	J	Centre Adapter Assembly	6864
E	Lens Assembly Includes lens, bayonet part fittings, inhalation valves and inhalation port gaskets	6898			

**REPLACE ALL DAMAGED PARTS IMMEDIATELY TO ENSURE CORRECT LEVELS OF PROTECTION**